

COMPRESSORE (AB 400) / COMPRESSOR (AB 400)

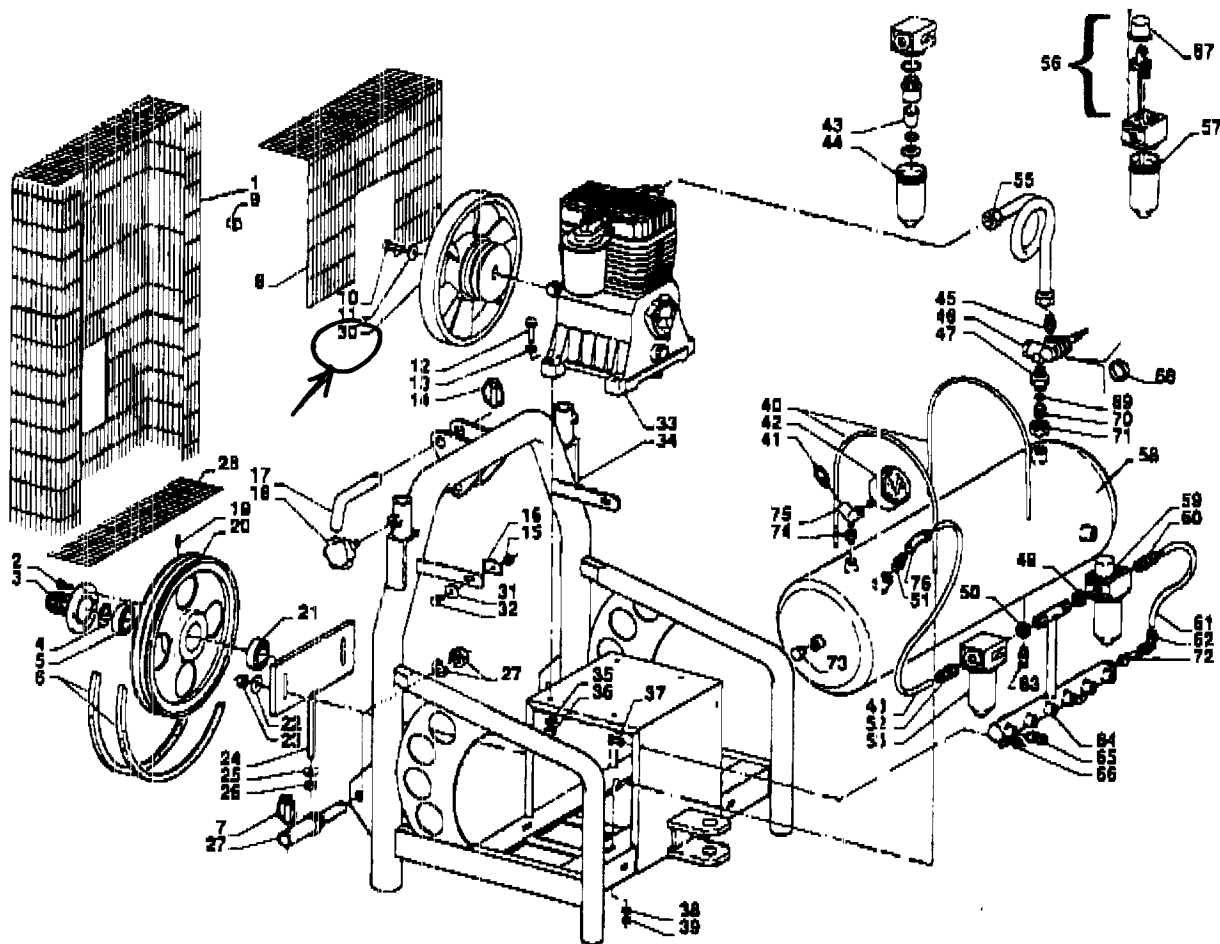
IDEAL

POS.	Q.	COD.	DESCRIZIONE	DESCRIPTION	POS.	Q.	COD.	DESCRIZIONE	DESCRIPTION
01	2	156300201	Biella	Rod	39	1	156300239	Rondella *	Washer *
02	2	156300102	Bronzina	Bushing	41	8	156300141	Vite	Screw
03	1	156300203	Guarnizioni	Gaskets	42	1	156300242	Carter monoblocco	Carter
04	1	156300204	Coperchio	Cover	48	1	156300248	Kit guarnizioni	Set of gaskets
05	1	156300105	Tappo	Plug	49	1	156300149	Chiavetta	Key
06	1	156300206	Spia olio	Oil level sight glass	50	1	156300250	Filtro completo	Filter assy
07	1	156300207	Guarnizione coperchio	Cover gasket	51	2	156300118	Vite	Screw
08	1	156300108	Coperchio cuscinetto	Cover bearing	52	1	156301133	Rondella *	Washer *
09	3	156300109	Vite	Screw	53	1	156301131	Vite *	Screw *
10	1	156300110	Tappo sfiato	Oil breather plug					
11	1	156300111	Cuscinetto	Bearing					
12	1	156300212	Galletto	Wing nut					
13	1	156300213	Rondella	Washer					
14	1	156300214	Tazza	Cup					
15	1	156300215	Cartuccia	Cartridge					
16	1	156300216	Tirante	Rod					
17	1	156300217	Collettore	Manifold					
18	2	156300218	Vite	Screw					
19	6	156300119	Vite	Screw					
20	1	156300220	Testa	Head					
21	1	156300221	Guarnizione testa	Head gasket					
22	1	156300222	Piastra valvole	Valve plate					
23	1	156300223	Guarnizione cilindro	Cylinder gasket					
24	2	156300224	Serie segmenti	Set of rings					
25	2	156300225	Pistone	Piston					
26	2	156300226	Spinotto	Pin					
27	4	156300227	Seeger	Seeger					
28	2	156300228	Pistone completo	Piston assy					
29	1	156300129	Guarnizione flangia	Flange gasket					
30	1	156300130	Flangia	Flange					
31	1	156300231	Cuscinetto	Bearing					
32	4	156300132	Dado autobloccante	Self locking nut					
33	1	156300233	Albero a gomito	Crankshaft					
34	1	156300234	Anello Mim	Mim ring					
35	1	156300235	Guarnizione	Gasket					
36	1	156300236	Supporto cuscinetto	Bearing support					
37	3	156300137	Vite	Screw					
38	1	156300238	Volano *	Flywheel *					

OPTIONAL:

54	1	1330501	Filtro bagno d'olio	Group filter
55	1	6070400	Supporto filtro	Filter support

\* = Solo per motocompressori



**COMPRESSORE PRESTIGE 400 / MOUNTED PTO COMPRESSOR**



POS.	Q.	COD.	DESCRIZIONE	DESCRIPTION	POS.	Q.	COD.	DESCRIZIONE	DESCRIPTION
01	1	3083700	Griglia protezione	Protection grill	43	1	133400202	Blocco filtrante	Filter block
02	4	1022008	Vite 6x20	Screw	44	1	133400201	Tazza per filtro	Cup
03	1	6026600	Mozzetto con flangia	Hub with flange	45	1	1244004	Nipples per tubo rame	Nipples
04	1	0201002	Anello seeger Ø 25	Seeger	46	1	1364101	Disgiuntore	Detaching valve
05	1	1381001	Cuscinetto	Bearing	47	1	1245009	Nipples	Nipples
06	2	1385006	Cinghia	Belt	48	1	1480003	Tubo nissan 6x10=L=0,30	Pipe
07	2	1268002	Spina a scatto Ø 10	Pin	49	1	1000415	Contradado	Lock nut
08	1	3081600	Griglia di chiusura	Grid	50	1	1000415	Contradado	Lock nut
09	8	1032001	Tassello	Pad	51	1	1233003	Raccordo R 6 Ø 10	Fitting
10	1	1022010	Vite 6x30	Screw	52	1	1235003	Raccordo R 1 Ø 10	Fitting
11	1		Rondella (parte testata)	Washer (head part)	53	1	1334002	Filtro	Filter
12	4	1021007	Vite 10x50	Screw	54	1		Nipples della testata	Head nipples
13	4	1010010	Rondella 10x30	Washer	55	1	8700001	Tubo rame	Copper pipe
14	1	1268002	Spina a scatto Ø 10	Pin	56	1	134400203	Blocco selettif	Selectif-block
15	2	1000203	Dado M8	Nut	57	1	134400201	Tazza lubrificatore	Lubricator cup
16	2	1031001	Piastrina quadra	Plate	58	1	3141880	Barilettolo li 22 CE	Li 22 tank
17	1	3030100	Spina per 3° punto	Pin	59	1	1344002	Lubrificatore	Lubricator
18	2	1364001	Volantino 10x25	Knob	60	1	1235003	Raccordo R 1 Ø 10	Fitting
19	1	1395001	Ingrassatore	Grease cup	61	1	1460003	Tubo nissan 6x10=L=0,23	Pipe
20	1	3004200	Puleggia	Pulley	62	1	1231002	Raccordo R 4 Ø 10	Fitting
21	1	1381001	Cuscinetto	Bearing	63	1	1302002	Rubinetto spurgo	Purge valve
22	2	1010013	Rondella 12x36	Washer	64	1	6006100	Distributore aere	Air distributor
23	2	1000207	Dado M12	Nut	65	8	1221002	Rubinetto rapido 1/4	Fitting 1/4
24	1	6000500	Supporto bracinghie	Support	66	2	1000203	Dado M 8	Nut
25	1	1010009	Rondella 10x20	Washer	67	1	134400202	Cappuccio lubrificatore	Dropper oil regulator
26	1	1000303	Dado autoblocc. M 10	Self locking nut	68	1	138410108	Filtro per disgiuntore	Valve filter
27	2	1268002	Perno sollevatore Ø22	Pin	69	1	0101041	Anello OR	O Ring
28	1	3174480	Griglia chiusura	Grid	70	1	3052600	Raccordo per disgiuntore	Fitting
30	1	3114100	Volano Ø275 2 spa 10C	Fly-wheel with pulley	71	1	1002005	Dado	Nut
31	2	1010006	Rondella 6x19	Washer	72	1	1233003	Raccordo R 6 Ø 10	Fitting
32	2	1022008	Vite 6x20	Screw	73	2	1313010	Tapo esagonale	Plug
33	1	1583002	Compressore "AB 400" senza valano	Head compressor without fly-wheel	74	2	1257005	Riduzione	Reduction
34	1	6031590	Telaio compressore	Compressor frame	75	3	1237001	Deviazione a 'y'	'Y' deflection
35	4	1010010	Rondella 10x30	Washer	76	1	1231002	Raccordo R 4 Ø 10	Fitting
36	4	1000203	Dado M 10	Nut					
37	2	1022034	Vite 6x40	Screw					
38	4	1010004	Rondella 6x19	Washer					
39	4	1000201	Dado M 8	Nut					
40	2	3004050	Archetto	Arch					

# Operation and Installation Data

The Mark II LOAD GENIE is a self contained, automatic, continuous run unloader and check valve.

## HOW IT WORKS

When compressed air in the tank has reached the factory preset pressure, the control will unload the compressor through the vent port. When air has been used from the Tank, and pressure drops, the Mark II control will permit the compressed air to be pumped into the tank again.

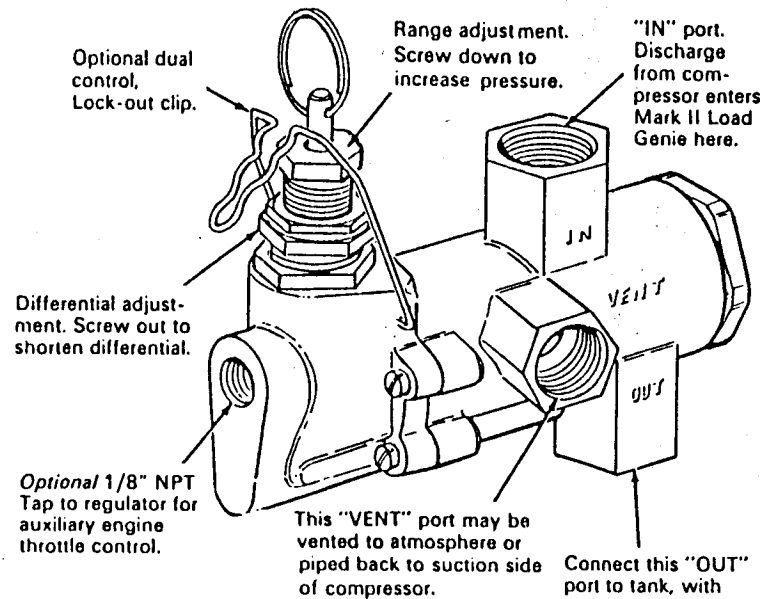
## REGULATOR ADJUSTMENTS

1. Loosen jam nuts #5 & #8.
2. The unloading pressure can be adjusted by screw #3. Turn clockwise to increase and counterclockwise to decrease pressure.
3. The differential (difference between cut-in and cut-out pressure) is obtained by adjusting screw #6. Turning clockwise will widen the differential and counterclockwise will narrow the differential.
4. Repeat items 1 & 2 until desired settings are obtained. It is not advisable to have a differential of less than 10% of the maximum cut-out pressure.
5. After adjustments are made, tighten jam nuts #5 & #8.

Minimum recommended compressor speed 400 R.P.M.

Maximum recommended working pressure 250 P.S.I.

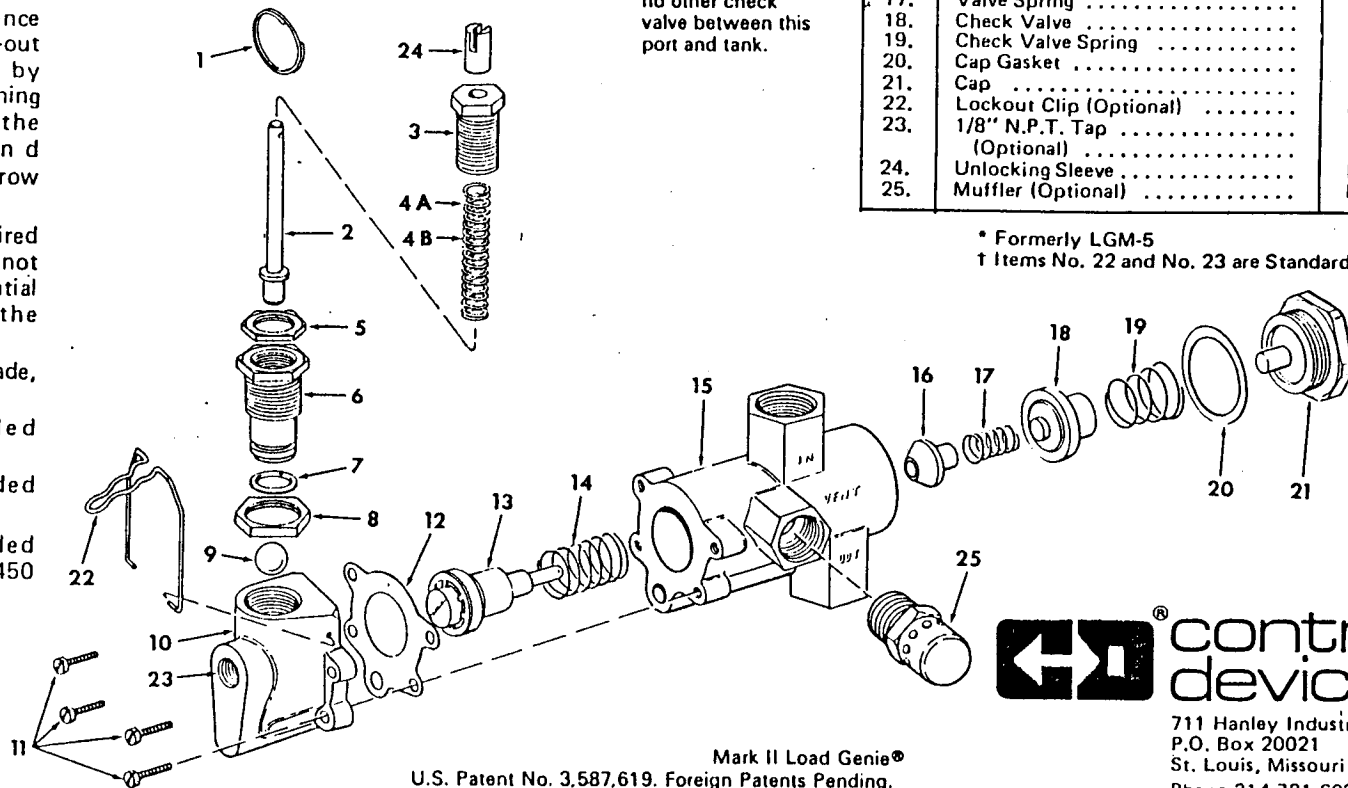
Maximum recommended operating temperature 450 Degrees F.



Optional 1/8" NPT Tap to regulator for auxiliary engine throttle control.

This "VENT" port may be vented to atmosphere or piped back to suction side of compressor.

Connect this "OUT" port to tank, with no other check valve between this port and tank.



## LGM SERIES PARTS LIST

Please order by Part Number — Not by Key No.

Key No.	Part Name	LGM-20* Part No.	LGM-125 Part No.
1.	Pull Ring .....	M20001	M20001
2.	Pressure Rod .....	M20003	M20003
3.	Spring Housing .....	M20005	M20005
4.	(a) Standard Regulator Spring (RED); 50 psi to 150 psi. ....	M20007	M20007
	(b) Optional High Pressure Regulator Spring (BLUE); 125 psi to 250 psi. ....	M20008	M20008
5.	Upper Jam Nut .....	M20011	M20011
6.	Differential Screw .....	M20013	M20013
7.	"O" Ring .....	M20015	M20015
8.	Lower Jam Nut .....	M20017	M20017
9.	Ball .....	M20019	M20019
10.	Regulator Body .....	M20021	M12521
11.	Screw (4 required) .....	M20023	M12523
12.	Regulator Gasket .....	M20025	M12525
13.	Piston Assembly (one part) .....	M20028-1	M12528-1
14.	Piston Spring .....	M20033	M12533
15.	Valve Body .....	M20035	M12535
16.	Valve Stem .....	M20037	M12537-1
17.	Valve Spring .....	350501	
18.	Check Valve .....	M20039	M12539
19.	Check Valve Spring .....	M20041	M12541
20.	Cap Gasket .....	M20043	M12543
21.	Cap .....	M20045	M12545
22.	Lockout Clip (Optional) .....	M20049	M20049†
23.	1/8" N.P.T. Tap .....	Please Specify.	†
24.	Unlocking Sleeve .....	M20055	M20055
25.	Muffer (Optional) .....	M20053	—

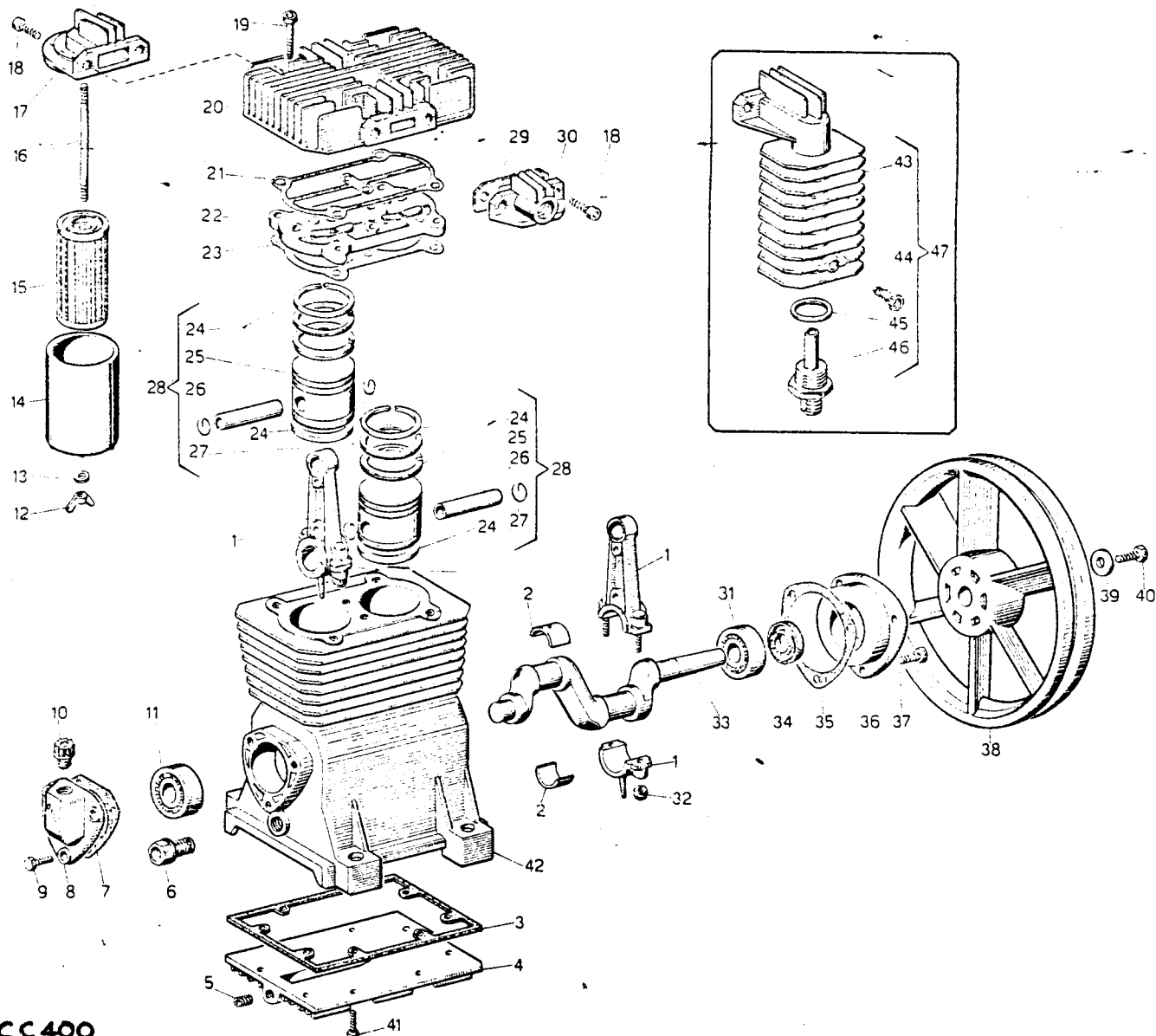
\* Formerly LGM-5

† Items No. 22 and No. 23 are Standard on the LGM-125.

Mark II Load Genie®  
U.S. Patent No. 3,587,619. Foreign Patents Pending.

 control  
devices inc.

711 Hanley Industrial Court  
P.O. Box 20021  
St. Louis, Missouri 63144  
Phone 314-781-6022



**AB 300 CC 400**

Ref. Ref. Ersatz. Ref. Rif.	N. N. N. N. N.	Code Code Code Code Code
1	2	11.300.001
2	2	10.220.024
3	1	10.300.050
4	1	10.300.003
5	1	10.220.029
6	1	10.300.028
7	1	10.220.046
8	1	10.220.004
9	3	10.220.027
10	1	10.220.025
11	1	10.220.026
12	1	10.220.013
13	1	10.220.054
14	1	10.220.012
15	1	10.220.045
16	1	10.220.014

Ref. Ref. Ersatz. Ref. Rif.	N. N. N. N. N.	Code Code Code Code Code
17	1	10.220.010
18	4	10.220.043
19	6	10.220.044
20	1	10.300.002
21	1	10.300.053
22	1	11.300.002
23	1	10.300.054
24	2	11.300.003
25	2	10.300.018
26	2	10.300.022
27	4	10.300.023
28	2	11.300.003
29	1	10.220.049
30	1	10.220.009
31	1	10.300.031
32	4	10.300.034

Ref. Ref. Ersatz. Ref. Rif.	N. N. N. N. N.	Code Code Code Code Code
33	1	10.300.030
34	1	10.300.047
35	1	10.220.047
36	1	10.300.005
37	3	10.220.036
38	1	10.300.046
39	1	10.300.044
40	1	10.220.037
41	8	10.220.040
42	1	10.300.001
43	1	10.220.008
44	1	10.220.017
45	1	10.220.052
46	1	10.220.015
47	1	11.220.005